

*18v Cordless
POWERblower*

User Manual

BL2

CELTM

THANK YOU

Thank you for investing in a CEL product. The 18v POWERblower has been engineered and made to demanding high quality standards; ease of operation and safety have taken a major role in development. Proper care of your product will give you years of trouble-free use.

Normal wear and tear, including accessory wear, is not covered under guarantee. The product is guaranteed for **domestic use** against manufacturing faults for a period of 24 months (for additional guarantee period (if any) please refer to the store or agent from which you purchased the product or contact the nearest authorized dealer). This product is not guaranteed for HIRE purposes.

If you have any questions, please contact us:

phone UK: +44 8453 88 97 69

phone US: +1 800 233 7592

service@cel-global.com

It is possible to download updated user manuals, view demonstration videos and find information about new products at: www.cel-global.com

Warning: User must read and understand the user manual before using the product to reduce the risk of injury. Failure to follow all instructions may result in electric shock, fire and/or serious personal injury. The product must be used only for its prescribed purpose. Any use other than those mentioned in this manual will be considered a case of misuse. The manufacturer shall NOT be liable for any damage or injury resulting from such cases of misuse, use of force, partially or completely dismantled appliances.



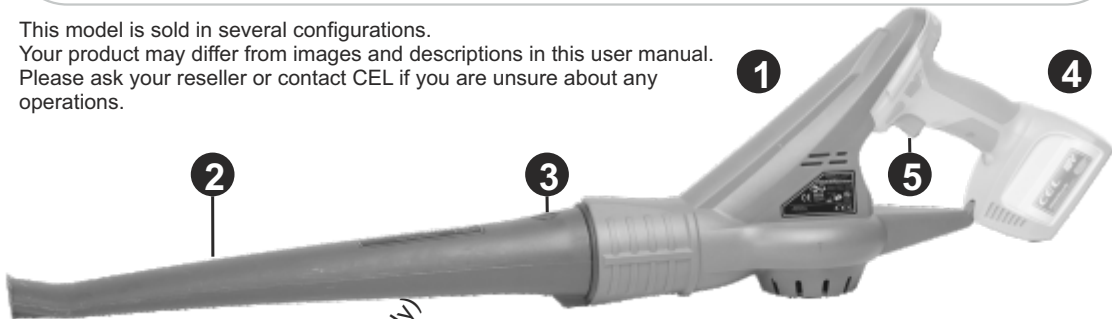
Contents, Assembly and Description of Features

Before using the blower familiarise yourself with all the operating features and safety requirements. Description and operating instructions for charger and battery are included with those products.
Only use the blower as intended. ie. Clearing dry leaves and lightweight debris from hard surfaces.

- 1.0 Important Safety Notes
- 2.0 Blowing Tips
- 3.0 Maintenance, Storage, Environment, FAQ
- 4.0 Technical Specifications

BLOWER

This model is sold in several configurations.
Your product may differ from images and descriptions in this user manual.
Please ask your reseller or contact CEL if you are unsure about any operations.



- 1 BL2 Blower
- 2 Tube
- 3 Tube Release Button
- 4 POWERhandle (sold seperately)
- 5 Operation Trigger
- 6 This User Manual

BEFORE STARTING THE BLOWER YOU MUST FIT THE TUBE.

To fit the tube, align with the head of the blower taking note of the notch to aid alignment. The release button should click as the tube is engaged. Lock in place using the supplied screw. Check the tube is secure before operating the blower.

Description of symbols

The rating plate on your tool may show symbols.

These represent important information about the product or instructions on its use.



General
Hazard



Read
Instructions



Keep Dry



Protect
Eyes, Ears,
Lungs



Keep
Bystanders
Away



Flying
Debris



Wear
Appropriate
Clothing

Eye protection must be worn.

Breathing protection must be worn.

Use at a distance of at least 10m from other people.

Conforms to relevant standards for electromagnetic compatibility.

Safety instructions

To use this tool properly, you must observe the safety limitations, the assembly instructions and the operating instructions to be found in this Manual. All persons who use and service this machine must be acquainted with this Manual and must be informed about its potential hazards. Children and infirm people must not use this tool. Children should be supervised at all times if they are in the area in which the tool is being used. It is also imperative that you observe the accident prevention regulations in force in your area. The same applies for general rules of occupational health and safety.

The manufacturer shall not be liable for any changes made to the tool nor for any damage resulting from such changes.

Even when the tool is used as prescribed it is not possible to eliminate all residual risk factors. The following hazards may arise in connection with the tool's construction and design:

Damage from flying debris.

Damage to eyes if effective safety glasses or shield are not worn.

Damage to ears if effective ear defenders are not worn.

Injury or illness caused by inhalation of dust and debris if breathing protection is not sufficient.

Always remove the battery from the tool before making any adjustments or performing maintenance.

Store tools safely. When not in use, tools should be stored in a dry place inaccessible to children.

Do not force the tool. The tool will do the job better and safer working at the rate for which it was designed.

Use the correct tool for the job. Do not force small tools or attachments to do the job best handled by a heavier duty tool.

Never use a tool for a purpose other than that for which it was intended.

Dress appropriately. Do not wear loose clothing or jewellery. They can be caught in moving parts.

Rubber gloves and non-slip footwear are recommended while working outdoors. If you have long hair, wear a protective hair covering.

Use safety accessories. Safety glasses and ear protection should always be worn.

Do not overreach. Keep your footing secure and balanced at all times.

Look after your tools. Keep tools clean and sharp for better and safer performance. Follow the instructions regarding lubrication and accessory changes. Keep tool handles dry, clean and free from oil and grease.

Disable idle tools. Remove the battery from the tool before servicing and when the tool is not in use.

Avoid unintentional starting. Make sure that the switches are in the OFF position before attaching the battery.

Stay alert Watch what you are doing, use common sense. Do not operate a power tool when you are tired or distracted.

Before using a tool, check that there are no damaged parts. If a part is slightly damaged, carefully determine it will operate properly and perform its intended function. Check for alignment of moving parts, binding of moving parts, breakage of parts, proper mounting and any other conditions that may affect the operation of the tool. A guard or other part that is damaged should be properly repaired or replaced by an authorized service facility, unless otherwise indicated in this Instruction Manual.

Defective switches must be replaced by an authorised service facility. Do not use a tool if the switch does not turn the tool on and off correctly.

Guard against electric shock. Prevent contact with grounded objects such as water pipes.

Use only approved parts. When servicing, use only identical replacement parts. Use an authorised service facility to fit replacement parts.

Do not let tool run unattended. Always wait until your power tool has come to a complete stop and remove the battery before leaving it.

Damaged batteries must be disposed of immediately. Liquids contained within can be extremely harmful.

WARNING. The use of an accessory or attachment, other than those recommended in this Instruction Manual, may present a risk of personal injury.

The tool must be used only for its prescribed purpose. Any use other than those mentioned in this Manual will be considered a case of misuse. The user and not the manufacturer shall be liable for any damage or injury resulting from such cases of misuse.

Additional safety rules for blowers

Never point the blower in the general direction of any person, animal or delicate object as debris may be flung by the air stream.

Do not use the blower in the rain or in a damp area.

Keep hands and fingers well away from the outlets, air stream and moving parts.

Wear work gloves, eye, ear and breathing protection, solid shoes and suitable clothing while using this blower.

Always grasp both handles when operating the unit, only operate the machine in its intended orientation.

Remove the battery when you have finished blowing, before cleaning or if you have been interrupted.

This blower has been designed to clear light debris and leaves from hard surfaces not for clearing grassed areas.

Do not attempt to free debris or adjust the blower and it's accessories before first switching off the machine and removing the battery.

Check the area to be cleared for stones and anything that may be flung by the tool. Remove wire and string as it may damage the blower.

Do not block the air outlets, this may damage the tool and cause injury.

Never use the machine without the safety devices properly fitted and undamaged

WARNING, the guards are for the safety of the operator and bystanders, never remove them while operating the machine.

Never touch or go near the blowing area while the motor is still turning, the tool may take a few seconds to slow down after the trigger is released.

Only use battery as supplied or identical replacements designed specifically for this tool.

Only blow if lighting levels are adequate.

Do not activate the tool if there is debris in the vents or otherwise obstructing operation.

Release trigger when moving between work areas, gravel paths can create flying debris danger.

If the machine appears to have any fault or makes any unusual sounds please consult the manual a service centre or your retailer.

If you are interrupted while operating the trimmer, complete the process and switch off before looking up.

Never allow untrained users or children to use the blower.

**Wear goggles, Wear ear protections, Wear breathing protection,
Wear work boots, Wear protective clothing.**



Always disconnect the battery and ensure the motor has stopped before cleaning or making any adjustments.

Before starting work examine the blower and accessories for defects and damage.

Check all fittings and fixings are present and correctly fitted.

Ensure repairs are carried out before using the trimmer or any of the accessories.

Repairs should only be carried out by qualified and authorised persons, if in doubt ask your retailer.

Run the blower briefly and check for unusual sound or vibration, and for any other signs of damage or deterioration.

Do not use batteries other than those specified on the product, the battery supplied with this product is specifically made for this tool and the supplied charger. Other batteries and chargers may cause explosions, leaks or fire.

If you feel any physical discomfort or pain stop work immediately.

Never direct the airflow toward a person or animal.

Make sure bystanders are safe, do not blow if you cannot see the area being effected.

Check the area to be blown for stones and anything that may be flung by the tool.

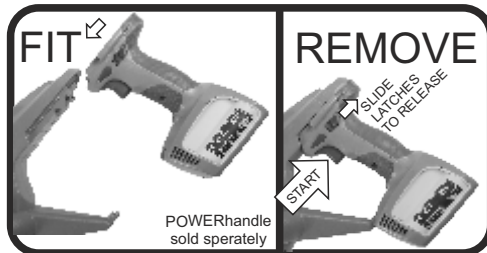
Some plants and trees contain harmful substances, always be aware of risks and take appropriate

measures before beginning work.

Always start the blower away from debris or materials that may cause harm

Some small sparks and a slight burning smell may emanate from the motor, this is normal and is due to the electronic brake.

If the battery or motor become too hot to touch stop work immediately.



POWERhandle
sold sperately

Switching on and off

1. Fit a charged POWERhandle by aligning the rails and sliding until locked into place.
2. Hold the tool in both hands keeping moving parts away from yourself, bystanders and any other objects. Ensure it is safe to start it and warn bystanders.
3. Direct the airstream into the area to be cleared. Work gradually in an arc pattern.
4. Squeeze the trigger to start.



Sweeping/Clearing

Start the blower before approaching the work area so as allow it to reach full speed and so debris is not accidentally thrown.

Be aware that the tool could react in your grip when the stream of air contacts objects..

Stand with a good posture and be aware of your surroundings, keep 2 hands on the blower and control with firm even pressure.

Clear larger areas by swinging the blower in an arc. The blower is designed for clearing dry leaves from hard surfaces, not clearing debris from grassed areas.

WARNING.

Switch off and remove the battery before carrying out any maintenance on the tool.

Charging

Please see relevant POWERhandle and Charger user manuals.

Lubrication

No Lubrication is necessary, the bearing area is sealed. After each use, carefully clean the blower with a brush or rag.

Clear any debris from around the moving parts.

General inspection

Regularly check that all the fixing screws are present and tight. They may vibrate loose over time.

Keep the tool's air vents unclogged and clean at all times.

Remove dust and dirt regularly.

Cleaning is best done with compressed air or a rag. Never use caustic agents to clean plastic parts.

CAUTION. Do not use cleaning agents to clean the plastic parts of the tool. A mild detergent on a damp cloth is recommended. Water must never come into contact with the tool.

When the time comes to dispose of this product please consider the environment and take it to a recognised recycling facility instead of disposing with general household waste.

The blower uses a battery which must be disposed of properly.

Call your local council, civic amenity site, or recycling centre for information on the recycling and disposal of electrical products and batteries.

Storage

Store the tool, instruction manual and accessories in a secure, dry place. In this way you will always have all the information and parts ready to hand.

Never store the Blower with a flat battery.

The battery should ideally be stored between 10°C and 24°C (50°F) and (75°F).

Where can I get additional batteries and accessories?

www.cel-garden.com or ask your retailer.

The Blower is not clearing the debris, why?

Most likely the debris is too heavy or compacted for the blower. Clear more often so leaves and debris cannot build up or loosen first with a rake. Ensure a charged battery.

The blower wont start, what's wrong?

a) Check the battery is charged and properly fitted, also make sure the triggers are working correctly and both are being squeezed at the same time. b) Remove the battery and check for debris, clean accordingly.

c) Lithium Ion batteries have a protection circuit to prevent them from completely discharging. The battery will provide constant power then stop rather than slowing down. Recharge fully.

Why does my blower stop sometimes?

See c) above.

Generating the air pressure needed to blow leaves and debris with any force is by its nature a very inefficient action. The battery charge will be quickly depleted. See www.cel-global.com for compatible products which will provide additional battery power or faster charging.

Where should I keep my Blower ?

In a dry place at a stable temperature between 10°C and 24°C (50°F and 75°F).

What should I do if my Blower gets wet?

Dry fully for at least 14 days in a warm but not hot place before trying to charge or use.

How can I get my Blower repaired if it is damaged?

Contact your retailer.

Where do I find my serial number?

On the right hand side of the blower head.

Where can I get replacement parts, advice or help?

Ask at your retailer or visit www.cel-garden.com

How long is the warranty and what is covered?

Please see inside cover

Technical Specifications

4.0

Unit operating time with 1.3Ah POWERhandle	-	Approx. 20 minutes with no load
Fan speed	-	12500rpm with no load
Airflow speed	-	190kph 120mph
Sound Pressure Level (dB(A))	-	86dB
Battery operating voltage	-	18V DC
Boxed Dimensions	-	485x290x215mm
	-	approx (19x11x8")
Weight excluding battery	-	1Kg (2.2lbs)
Product Code	-	BL2

If you experience any problems with the product please contact

email: service@cel-global.com

phone UK: +44 8453 88 97 69

phone US: +1 800 233 7592

www.cel-global.com



**GENERAL HAZARD
SAFETY ALERT**



**BEWARE OF FLYING
OBJECTS AND DEBRIS**



READ INSTRUCTION MANUAL



KEEP BYSTANDERS AWAY

CEL
C Enterprise Ltd

C Enterprise Limited www.cel-global.com info@cel-global.com

UK • HK • USA • China • Europe • Australia • Japan

© Copyright C Enterprise Limited 2010

Manual version 101223, Designed and Edited in the UK, Made and Printed in China