

TECHNICAL SPECIFICATIONS

IMPORTANT SAFETY NOTES

PRODUCT CODE • 144BP15
 WORKING / CHARGED VOLTAGE • 14.4V DC / 16.8V DC
 CAPACITY (Amp Hours) / CELL MAKEUP • 1.5Ah / 4x 3.6V Li-Ion cells
 WEIGHT • 290g (10oz)

COMPATIBLE CHARGERS • 144FC, 144RC
 PRODUCT CODE • 144FC
 INPUT VOLTAGE • 240V AC 50Hz
 OUTPUT VOLTAGE @ CURRENT • 18V DC @ 1.5A
 WEIGHT • 375g (13oz)

PRODUCT CODE • 144RC + 144RC-BS
 INPUT VOLTAGE • 240V AC 50Hz
 OUTPUT VOLTAGE @ CURRENT • 18V DC @ 400mA
 WEIGHT • 395g (14oz)

This product is sold in several configurations. The Rating Label is fixed inside the battery compartment, check the codes on the Rating Label on your product match those in this user manual. The Rating Label will show basic warnings and specifications. The images and descriptions in this user manual may differ from your product. For features or accessories not covered by this manual or if you are unsure about a feature or function contact your supplier or visit www.cel-global.com where you can find updated user manuals and compatible parts.

No person should use this product without first reading and understanding all documentation and warning labels and those from accessories and attachments used. Keep these instructions safe and provide them to all users.
 For use only as outlined in this document, any other use will be considered as misuse.

This product contains materials that should be recycled but can not be disposed of with regular household waste. For disposal options contact your local recycling centre, council offices or your place of purchase.

© C Enterprise LTD 2014 Designed in UK Printed in China
 Manual Version: 140103
www.cel-global.com • info@cel-global.com
 UK • HK • USA • China • Europe • Australia • Japan

Intended Use
 The 144BP15 battery pack is intended for powering compatible tools for their intended purpose up to their documented operational limit for short periods. It must only be charged using a charger recommended by the manufacturer.
 The chargers 144FC and 144RC are intended to charge the 144BP15 battery pack or batteries specifically recommended by the manufacturer. No other battery may be charged using these chargers.

This product is sold in several configurations. The images and descriptions in this user manual may differ from your product. For features or accessories not covered by this manual or if you are unsure about a feature or function contact your supplier or visit www.cel-global.com where you can find updated user manuals and compatible parts.

General Safety Rules for Power Tools
Read all warnings and all instructions.
 Failure to follow the warnings and instructions may result in electric shock, fire and/or serious injury.
 Save all warnings and instructions for future reference.
 The term "power tool" in the warnings refers to your mains-operated (corded) power tool or battery-operated (cordless) power tools plus compatible chargers and accessories.

1) Work area safety
 a) Keep work area clean and well lit. Cluttered or dark areas invite accidents.
 b) Do not operate power tools in explosive atmospheres, such as in the presence of flammable liquids, gases or dust. Power tools create sparks which may ignite the dust or fumes.
 c) Keep children and bystanders away while operating a power tool. Distractions can cause you to lose control.
2) Electrical safety
 a) Power tool plugs must match the outlet. Never modify the plug in any way. Do not use any adapter plugs with earthed (grounded) power tools. Unmodified plugs and matching outlets will reduce risk of electric shock. Always fully uncoil cables to avoid heat buildup.
 b) Avoid body contact with earthed or grounded surfaces, such as pipes, radiators, ranges and refrigerators. There is an increased risk of electric shock if your body is earthed or grounded.
 c) Do not expose power tools to rain or wet conditions. Water entering a power tool will increase the risk of electric shock.
 d) Do not abuse the cord. Never use the cord for carrying, pulling or unplugging the power tool. Keep cord away from heat, oil, sharp edges and moving parts.
 Damaged or entangled cords increase the risk of electric shock.
 e) When operating a power tool outdoors, use an extension cord suitable for outdoor use. Use of a cord suitable for outdoor use reduces the risk of electric shock. Fully uncoil all cords in use.
 f) If operating a power tool in a damp location is unavoidable, use a residual current device (RCD) protected supply. Use of an RCD reduces the risk of electric shock.

3) Personal safety
 a) Stay alert, watch what you are doing and use common sense when operating a power tool. Do not use a power tool while you are tired or under the influence of drugs, alcohol or medication. A moment of inattention while operating power tools may result in serious personal injury.
 b) Use personal protective equipment. Always wear eye protection. Protective equipment such as dust mask, non-skid safety shoes, hard hat, and/or hearing protection used for appropriate conditions will reduce personal injuries. Be aware of dangerous conditions that can occur while working on certain materials. Take appropriate measures to reduce risk. For example; Oak and Beech can give off harmful dust. Use dust extraction and respiratory protection along with other safety precautions.

4) Power tool use and care
 a) Do not force the power tool. Use the correct power tool for your application. The correct power tool will do the job better and safer at the rate for which it was designed.
 b) Do not use the power tool if the switch does not turn it on and off. Any power tool that cannot be controlled with the switch is dangerous and must be repaired.
 c) Disconnect the plug from the power source and/or the battery pack from the power tool before making any adjustments, changing accessories, or storing power tools. Such preventive safety measures reduce the risk of starting the power tool accidentally.
 d) Store idle power tools out of the reach of children and do not allow persons unfamiliar with the power tool or these instructions to operate the power tool. Power tools are dangerous in the hands of untrained users.
 e) Maintain power tools. Check for misalignment or binding of moving parts, breakage of parts and any other condition that may affect the power tool's operation. If damaged, have the power tool repaired before use. Many accidents are caused by poorly maintained power tools.
 f) Keep cutting tools sharp and clean. Properly maintained cutting tools with sharp cutting edges are less likely to bind and are easier to control.
 g) Use the power tool, accessories and tool bits etc. in accordance with these instructions, taking into account the working conditions and the work to be performed. Use of the power tool for operations different from those intended could result in a hazardous situation.

5) Battery tool use and care
 a) Recharge only with the charger specified by the manufacturer. A charger that is suitable for one type of battery pack may create a risk of fire when used with another battery pack.
 b) Use power tools only with specifically designated battery packs. Use of any other battery packs may create a risk of injury and fire.
 c) When battery pack is not in use, keep it away from other metal objects, like paper clips, coins, keys, nails, screws or other small metal objects, that can make a connection from one terminal to another. Shorting the battery terminals together may cause burns or a fire.
 d) Under abusive conditions, liquid may be ejected from the battery; avoid contact. If contact accidentally occurs, flush with water. If liquid contacts eyes, additionally seek medical help. Liquid ejected from the battery may cause irritation or burns.
6) Service
 Have your power tool serviced by a qualified and approved repair person using only identical replacement parts. This will ensure that the safety of the power tool is maintained.

c) Prevent unintentional starting. Ensure the switch is in the off-position before connecting to power source and/or battery pack, picking up or carrying the tool. Carrying power tools with your finger on the switch or energising power tools that have the switch on invites accidents.
 d) Remove any adjusting key or wrench before turning the power tool on. A wrench or a key left attached to a rotating part of the power tool may result in personal injury.
 e) Do not overreach. Keep proper footing and balance at all times. This enables better control of the power tool in unexpected situations.
 f) Dress properly. Do not wear loose clothing or jewellery. Keep your hair, clothing and gloves away from moving parts.
 Loose clothes, jewellery or long hair can be caught in moving parts.
 g) If devices are provided for the connection of dust extraction and collection facilities, ensure these are connected and properly used. Use of dust collection can reduce dust-related hazards.

6) Service
 Have your power tool serviced by a qualified and approved repair person using only identical replacement parts. This will ensure that the safety of the power tool is maintained.

Declaration of Conformity
 We declare under our sole responsibility that the products described in "Technical Specifications" is in conformity with the following standards or standardisation documents:
 144FC
 EN55014-1:2006+A1:2009
 EN61000-3-2:2006+A1:2009+A2:2009
 EN61000-3-3:2008
 EN55014-2:1997+A1:2001+A2:2008
 IEC 60335-2-29:2002+A1:2004+A2:2009
 IEC 60335-1:2001+A1:2004+A2:2006
 144RC
 EN 60335-2-29:2004
 EN 62233:2008
 EN 60335-1:2002+A11:A1:04+A12:A2:06+A13:08
 EN 55014-1:2006
 EN61000-3-2:2006
 EN61000-3-3:1995+A1:2001+A2:2005
 EN55014-2:1997+A1:2001
 144BP15
 2006/42/EC

Chris Elsworth
 Managing Director - 3rd January, 2014
 C Enterprise (UK) LTD
 Unit 4 Harbour Road Trading Estate
 Portishead, BS20 7BL, UK

Technical file can be provided by:
 CEL-HK 1604 Nan Fung Commercial Centre,
 19 Lam Lok Street, Kowloon Bay, Hong Kong

If you experience any problems with the product please contact your supplier or find your regional office via the website: www.cel-global.com

Guarantee
 Normal wear and tear, including accessory wear, is not covered under guarantee. Following successful registration, the product is guaranteed for domestic use against manufacturing faults for a period of 24 months. Proper care is required to maintain this product in working condition. This product is not guaranteed for hire purposes. If you have any questions, please contact us.

Declaration of Conformity
 We declare under our sole responsibility that the products described in "Technical Specifications" is in conformity with the following standards or standardisation documents:

144FC
 EN55014-1:2006+A1:2009
 EN61000-3-2:2006+A1:2009+A2:2009
 EN61000-3-3:2008
 EN55014-2:1997+A1:2001+A2:2008
 IEC 60335-2-29:2002+A1:2004+A2:2009
 IEC 60335-1:2001+A1:2004+A2:2006
 144RC
 EN 60335-2-29:2004
 EN 62233:2008
 EN 60335-1:2002+A11:A1:04+A12:A2:06+A13:08
 EN 55014-1:2006
 EN61000-3-2:2006
 EN61000-3-3:1995+A1:2001+A2:2005
 EN55014-2:1997+A1:2001

144BP15
 2006/42/EC

Chris Elsworth
 Managing Director - 3rd January, 2014
 C Enterprise (UK) LTD
 Unit 4 Harbour Road Trading Estate
 Portishead, BS20 7BL, UK

Technical file can be provided by:
 CEL-HK 1604 Nan Fung Commercial Centre,
 19 Lam Lok Street, Kowloon Bay, Hong Kong

WARNING SYMBOLS

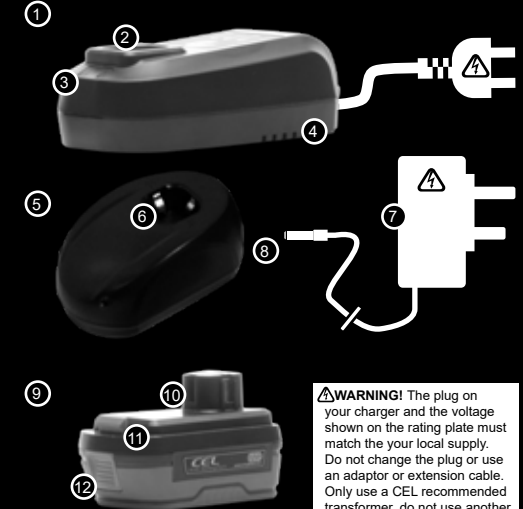
- GENERAL HAZARD
- READ INSTRUCTIONS
- PROTECT VISION, HEARING, RESPIRATION
- FLYING DEBRIS
- BE AWARE OF OTHERS
- KEEP DRY
- PROTECT FROM OVERHEATING
- WEAR APPROPRIATE CLOTHING
- SHARP BLADES
- RISK OF SHOCK IF ABUSED

This user manual refers to the battery 144BP15 and two different chargers 144FC and 144RC. Use of the 2 chargers is very similar, instructions specific to each charger are clearly marked. Only the chargers and battery in this user manual are compatible, no other battery or charger may be used.
 Users must read and understand all warnings and documentation relevant to attachments, accessories and materials used. If absent, replacement user manuals can be found via www.cel-global.com



- 144FC Fast Charger with plug to match your local supply**
 - 1 Charger contacts positive, negative and communication
 - 2 Charge Indicator Lights
 - 3 Vents
- 144RC Regular Charger**
 - 5 Charger contacts positive, negative and communication
 - 6 144RC-BS Transformer with plug to match your local supply
 - 7 Transformer Connector
- 144BP15 Lithium Ion battery pack**
 - 9 3 Battery Contacts - positive, negative and communication
 - 10 Battery Locking Catch
 - 11 Battery Release Button

User Manual Fast Charger Regular Charger Lithium Battery



WARNING! The plug on your charger and the voltage shown on the rating plate must match the your local supply. Do not change the plug or use an adaptor or extension cable. Only use a CEL recommended transformer, do not use another type even if the plug fits.

14.4V **CEL**

CHARGING A BATTERY

Read and understand all safety warnings and all applicable instructions before operating this product, attached devices or accessories.

Failure to follow the warnings and instructions may result in electric shock, fire and/or serious injury.

WARNING! The plug on your charger and the voltage shown on the rating plate must match the your local supply. Do not connect the charger if it does not match, contact your supplier for a replacement. Do not change the plug or use an adaptor or extension cable.

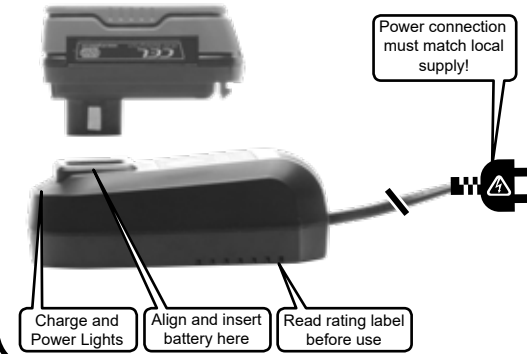
WARNING! For AC tools and devices; check that input voltages on the rating plates and the plug types match your local mains supply. If it is different contact your supplier immediately and follow their advice. Do not modify the charger or plug in any way. For DC tools; only use batteries and chargers specifically recommended by the manufacturer.

Charging a Battery

1. Connect your charger to a safe and suitable power supply and wait for the power indicator to light.
2. Clear any debris and insert the battery to be charged into the charger dock.
3. Watch for the red light to appear indicating the battery is being charged.
4. When the red light goes out the battery is fully charged. Do not leave the battery on the charger or leave the charger connected to a power supply for more than 24 hours.
5. Remove your battery and store it so the contacts cannot be touched by a conductive item such as a metal toolbox or screw.
6. Unplug the charger and store with the battery and all documentation in a dry location out of reach of children. See the storage section for more information.

I44FC FAST CHARGER

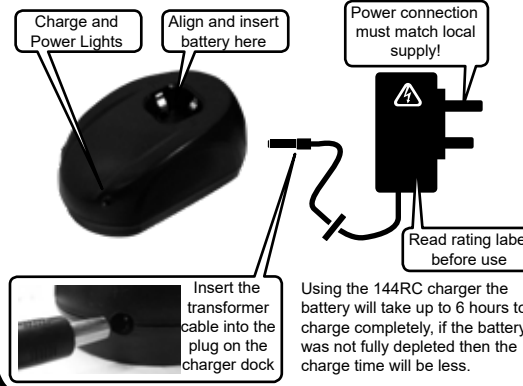
I44FC consists of a single charger dock with a cable attached. On the I44FC charger the battery will be charged from 0% to 100% in around 1 hour, if the battery was not fully depleted then the charge time will be less. The initial phase of the charge is very fast so the battery may reach as much as 80% charge within 30 mins from flat, the following 20% charge is slower and may take another 30 mins.



I44RC REGULAR CHARGER

I44RC consists of 2 parts, a transformer block (I44RC-BS) and charger dock (I44RC). The transformer must be attached to the charger dock before being connected to a power source.

WARNING! Only use the transformer block provided with your I44RC, other transformers may cause a battery to explode or a fire due to incompatible components even if the specifications are the same.



CHARGE INDICATOR LIGHTS



Both chargers use these light patterns
GREEN = POWER ON
RED=CHARGING, GOES OUT WHEN FULL
GREEN = FULLY CHARGED
FLASHING RED = HOT/ERROR, ALLOW TO COOL THEN RETRY
If no lights show first check the power supply is functional, then check the fuse if present. If the charger still has no lights contact your supplier for a replacement. If the flashing red indicates an error and both battery and charger are cool then contact your supplier or CEL for advice.

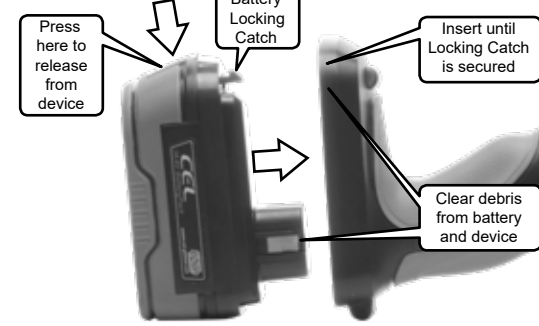
FITTING/REMOVING A BATTERY

WARNING! If the battery is hot, damaged or emitting smoke, strong smells it should not be used. Contact your supplier or CEL to replace faulty items.

Fitting the battery to a device
NOTE! Remove any debris from the area that joins the battery to the device. Damage to contacts or mechanical controls could occur if debris is caught between them.

WARNING! Ensure the switch or trigger is in the OFF position and cannot be accidentally pressed when inserting the battery. Align the battery so the protrusion goes inside the matching part on the device. Once aligned, gently press the two parts together until there is a "click" as the locking catch engages. Test the catch is secure, check all attachments or accessories are securely fitted, and adjustment tools removed. Test the electrical contacts are engaged by briefly starting then stopping the device as described in the applicable user manual.

Removing the Battery
Switch the device to the off position and engage any safety locks. Hold the device securely and grip the battery in a way that lets you press the release catch. Press the release catch, the battery should easily slide from the tool. Do not force it, if it sticks check the release catch action.



OPERATING A TOOL

Before using, ensure accessories are secure and will not cause harm when they move, remove all adjustment tools and then briefly activate the device to ensure any attachments are secure and correctly aligned. If there is any binding or unusual movement, vibration or sound then loosen and re-fit.

Always secure your work in a way that allows the device to move freely above and below the work piece and so that the work piece does not jam the tool between cut edges. A secure work piece is safer and a good finished result will be easier to achieve. Firm control using both hands on the device and a stable stance will provide better control if the tool kicks back or jams. Start slowly and allow the tool to do the work, pressing hard will slow the cutting rate and drain the battery much faster.

WARNING! Take extra care to prevent fingers and other objects coming into contact with the blade, especially on the other side of materials being cut. Take extra care not to cut into pipe work and live electrical items, if you are unsure, do not cut.

ALWAYS WEAR SUITABLE SAFETY EQUIPMENT WHEN OPERATING POWER TOOLS OR WORKING WITH HARMFUL MATERIALS, IF UNSURE, CONSULT AN EXPERT.

USE WELL MAINTAINED AND SUITABLE TOOLS AND ACCESSORIES, FORCING A SMALL TOOL TO DO WORK WHICH REQUIRES A LARGER TOOL MAY RESULT IN INJURY OR DAMAGE TO PROPERTY. BLUNT OR DAMAGED ACCESSORIES PRODUCE POOR RESULTS AND ARE THE CAUSE OF MANY INJURIES.



CARE AND ENVIRONMENT

General inspection
Regularly check that all the fixing screws are present and tight, they may vibrate loose over time.

Keep the device's air vents unclogged and clean at all times. Remove dust and dirt regularly, before it can build up. Cleaning is best done with compressed air or a rag.

CAUTION! Do not use cleaning agents to clean the plastic parts of the tool. A mild detergent on a damp cloth is recommended. Water must never come into contact with the device. After each use, remove the battery and carefully clean the tool and battery with a brush or rag. Clear any debris from around the battery mount, moving parts and clips.

Storage
Store all tools, instruction manuals and accessories in a secure, dry place. In this way you will always have all the information and parts ready to hand. Lithium ion batteries should ideally be stored with 40 to 80% charge between 10°C and 20°C (50°F and 68°F).

WARNING! Always test and charge Li-ion batteries before storage and at least every 3 months to prevent permanent damage. Using the battery for a short period then charging it will allow the charger to balance the voltage between the 4 cells.

Environment
When the time comes to dispose of this product please consider the environment and take it to a recognised recycling facility instead of disposing with general household waste.

Contact your local council, civic amenity site, or recycling centre for information on the recycling and disposal of electrical products and batteries. If you do not have access to suitable disposal facilities in your area please contact your place of purchase, they will advise you on the best way to dispose of your product.

Maintenance
All electrical parts should be regularly serviced by an approved engineer.

